

# Concept Masterplan

—  
Maasai Girls Rescue Center

*Concept Masterplanning +  
Imagery*

—  
21 Dec 2020

Clarke  
Hopkins  
Clarke





# MGRC Vision

## Maasai Girls Rescue Centre

### MGRC Mission statement

'Our Mission is to adopt young and at-risk Maasai girls, educate them, and teach them life sustaining skills for the betterment of their village.'

### MGRC Vision

Our vision is to provide:

- + a safe haven for girls who are being forced into early marriage or are running away from forced FGM;
- + to teach Maasai girls to dream about their future and develop a vision that includes a productive and full life
- + mentoring in assertiveness, life skills, and study habits;
- + family counselling to get parents on board with their girls' education;
- + a study hall that includes tutoring and study resources;
- + after school classes for girls who are behind in their education, due to the lack of schooling prior to being rescued;
- + business and technical training so girls can become self-sustaining, even if they don't excel in academics.
- + the girls stay at MGRC until they achieve these goals

### Aspirations for Masterplanning

The following key themes outline aspirations in relation to creating a well-established home and a place of nurture, care, learning and support for Maasai girls in need.

- + A Welcoming, Permanent Family Environment

*The center and the planning of MGRC should enable a loving, welcoming, inclusive, safe and homely environment that supports the growth and development of family values and a feeling of belonging for the girls and their homes.*

- + The MGRC is a community

*The MGRC is a place that creates a community in itself, it delivers opportunities through this togetherness and also through the external opportunities it provides. Integrating facilities such as a vocational skills training center and resource centres can foster greater community involvement and participation and assist the center to develop partnerships with people, organisations, elders and local services that further support the futures for the girls.*

- + All of life learning

*Learners and learning are the core focus for developing a centre of strength. The masterplan design should be centred on providing supportive homely environments that develop the whole person — intellectually, emotionally, socially, physically and culturally.*





# Urban Design & MGRC

**In relation to the development of a new center to house Maasai Girls Rescue, the following objectives are identified as relevant for this project:**

- + Provide well configured built form that relates to the site and surrounding context, and provides a good network of relationship between the different uses accommodated on-site; living (homes), preschool, administrative, agricultural, security, storage, and varied uses; dining/events.
- + Well considered entry and access are considered and provide a good interface between the entry to the facility and the privacy of the homes.
- + Circulation around and through the site is designed to support a secure functioning of the center and both its interior and outdoor spaces, and also provide for good connections between buildings.
- + Thresholds are considered, and more public uses are located to the front of the site closer to the entry, keeping the homes more embedded into the center of the site providing some spatial separation from the more public parts of the facility.
- + Built form and layout should create character and enable place-making that enhance conviviality and sociability, as well as function, security and privacy.
- + The multipurpose hall should be designed to provide maximum flexibility to accommodate the centers varied possible range of activities
- + Explore opportunities for a skills training centre to foster the relationship between the girls and their wider community.
- + Buildings are arranged to support best solar orientation and light into buildings.
- + Ensure that energy efficiency and smart design practices are considered where relevant.
- + Provide a flexible and adaptable collection of spaces, that provide for changing and varied future uses also.
- + Incorporate adequate buildings to support farm and agricultural requirements.
- + Use of local materials and construction methods.
- + Buildings constructed for optimum durability and resilience.





LAKE NATRON

NGORONGORO  
CRATER

KARATU

**SITE**

MTO WA MBU

Town of  
ARUSHA

LAKE EYASI

LAKE MANYARA





# Site

## Gongali Plot, Karatu

### Proposed Site for MGRC New Build

This site is situated approximately 2.9km out of Karatu centre and district in the region of Arusha, in the North East of Tanzania.

The proposed site is located within the Great Rift Valley sharing significant landscapes such as the Ngorongoro Crater (also protected as a UNESCO world heritage site), Lake Manyara and Lake Eyasi, all within proximity.

Two plots of land (Site A + Site B) are available to MGRC on either side of a local road that connects through to the township of Karatu (in the North East).

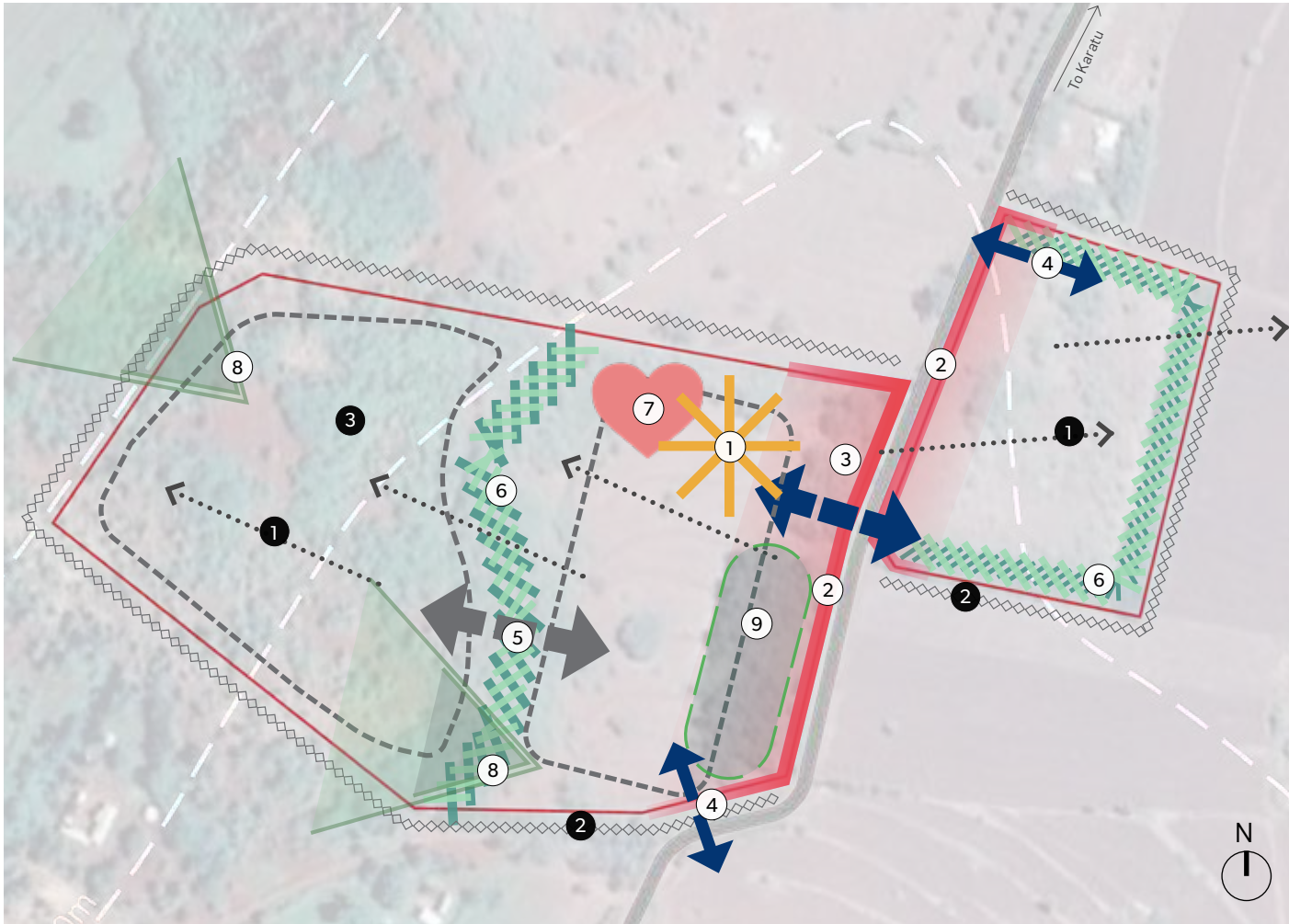
Site A has a topographical fall of approximately 30m from the ridgeline of the roadside boundary (to the East), falling away to the back of the plot (to the West).



### Key Info

- + LOCALITY: Gongali Village
- + AREA: *Site A* - 4.59ha, *Site B* - 1.32ha

# Opportunities & Constraints Plan



## OPPORTUNITIES

- ① Prominent location for public interface/built form/main entry/administration.
- ② Key frontage to local road.
- ③ Connections/Entry possibilities
- ④ Connections/Servicing access
- ⑤ Connections/Public-to-private
- ⑥ Integration of landscape buffers can be utilised to provide privacy, thresholds and integrate nature + planting.
- ⑦ Provide a centre/community focus/heart Opportunity for shared infrastructure.
- ⑧ Long range views out over the valley.
- ⑨ Existing Eucalyptus trees

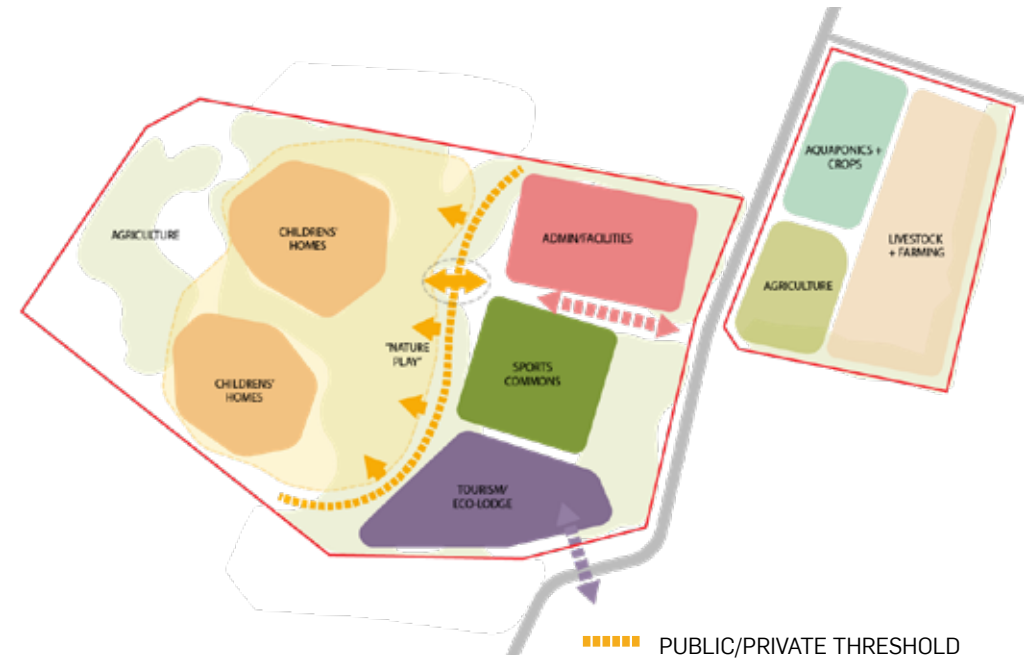
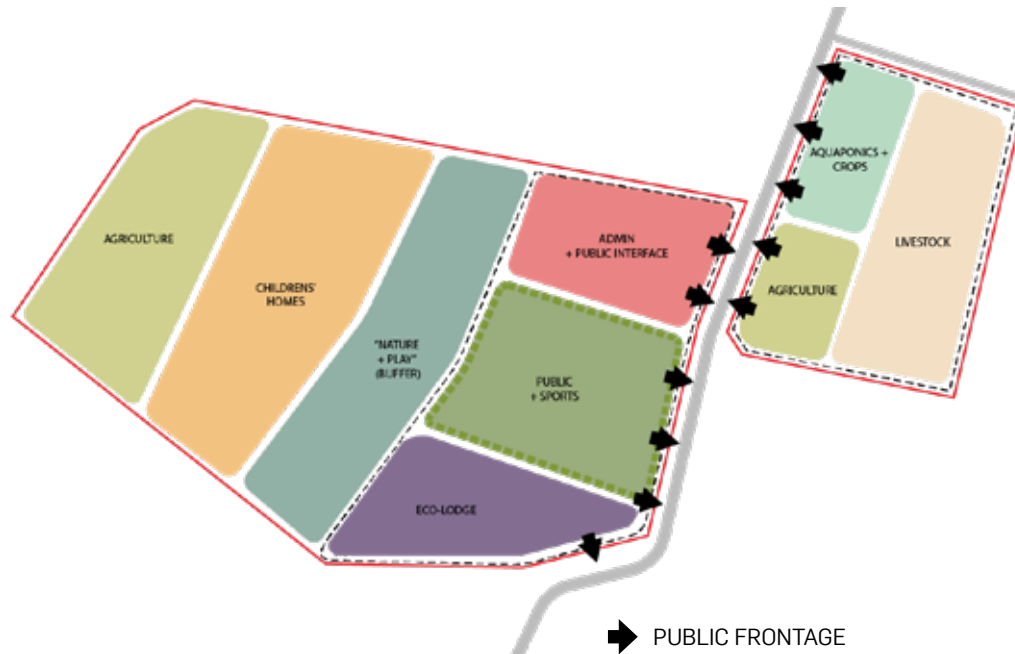
## CONSTRAINTS

- ① There is a significant fall from the ridgeline of the road down on both sites A + B.
- ② Perimeter security fence required (strong enough to also prevent animals from entering).
- ③ Existing scrub on site may need to be cleared to accomodate buildings.



# Key Design Moves

## Diagrams



### SITE ZONING + INTERFACES

- + Public uses situated along the road interface
- + Site uses spatial zones to locate uses at the best position on the site to capture views, support privacy, enable positive spatial clustering/organisation, access and security.

### USES + THRESHOLDS

- + A nature buffer is used to create spatial separation and a public/private threshold. This is utilised to support privacy and home like environment for the children's houses to the west of the site, whilst enable more public functions of the centre to the road side to the east.
- + The uses of the MGRC are grouped to support best communities/relationships of uses on the plots.

# Key Design Moves

## Diagrams



### ACCESS + CIRCULATION

- + Access to the administrative heart creates a public spine into the front part of the main site, giving access to sports fields also.
- + A network of pathways provide a series of more informal pathways connecting through to the girl's homes.
- + Secondary servicing access provided to both sites, supporting the farming and maintenance access into the farming/maintenance/storage sheds of the facilities.



### VILLAGE CLUSTERS + COMMUNAL SPACES

- + The MGRC forms a village of its own, grouped into 3 main clusters that form little communities centred around a common heart.
- + Each cluster has buildings situated around its own common area in the middle, to encourage a strong sense of belonging, community and sociability.



# Concept Masterplan

## Maasai Girls Rescue Centre

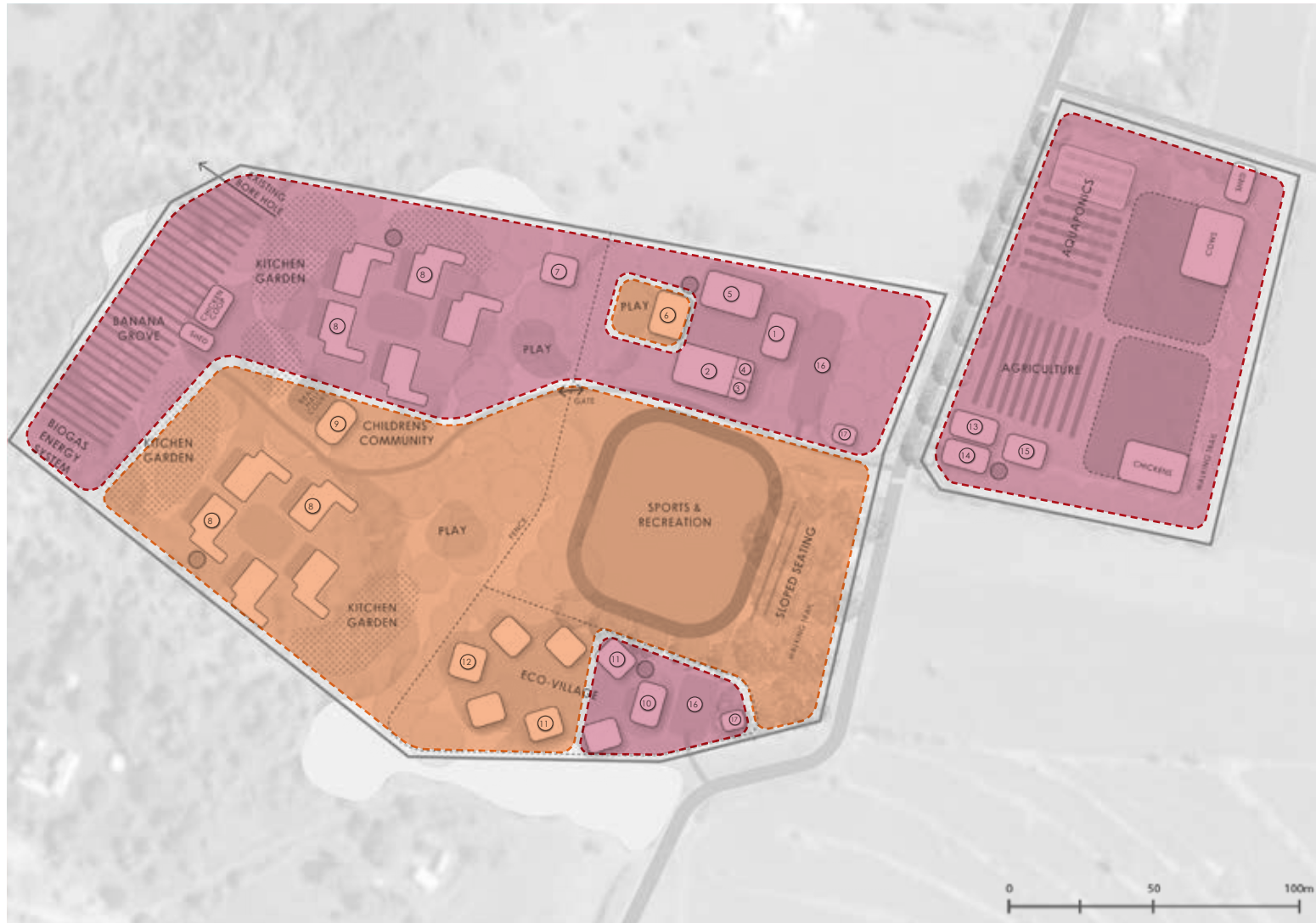


- ① Admin (120m<sup>2</sup>)
- ② Hall (350m<sup>2</sup>)
- ③ Bakery
- ④ Kitchen
- ⑤ Training (250m<sup>2</sup>)
- ⑥ Preschool (185m<sup>2</sup>)
- ⑦ Directors House
- ⑧ Childrens home (275m<sup>2</sup>)
- ⑨ Pavilion / Kitchen
- ⑩ Concierge & admin (150m<sup>2</sup>)
- ⑪ Lodge villa with raised deck (100m<sup>2</sup>)
- ⑫ Guest lounge (120m<sup>2</sup>)
- ⑬ Maintenance shed
- ⑭ Bus Shelter
- ⑮ Caretaker's home
- ⑯ Carpark
- ⑰ Gatehouse
- Existing trees
- New trees
- Possible indigenous trees
- Water tanks

\*\* Day watchman at admin heart, night watchman at eco-village

# Concept Masterplan

## Maasai Girls Rescue Centre



### Stage 01

- ① Admin (120m<sup>2</sup>)
- ② Hall (350m<sup>2</sup>)
- ③ Bakery
- ④ Kitchen
- ⑤ Training (250m<sup>2</sup>)
- ⑥ Directors House
- ⑧ Childrens home (275m<sup>2</sup>)
- ⑩ Concierge & admin (150m<sup>2</sup>)
- ⑬ Maintenance shed
- ⑭ Bus Shelter
- ⑮ Caretaker's home
- ⑯ Carpark
- ⑰ Gatehouse

### Stage 02

- ⑦ Preschool (185m<sup>2</sup>)
- ⑧ Childrens home (275m<sup>2</sup>)
- ⑨ Pavilion / Kitchen
- ⑪ Lodge villa with raised deck (60m<sup>2</sup>)
- ⑫ Guest lounge (120m<sup>2</sup>)



# Masaai Girls Rescue Centre Proposal

## 3D Aerial View

---



# Proposed MGRC Masterplan

## Area / Use Summary

BUILDING / AREA	No.	NOTES	AREA Sq/m	CAPACITY
Childrens Homes (STAGE 1) (Each house has a total area of approx 275m2)	5	Each home has • 3x girls bedrooms • 2xMatron's rooms with bathrooms • Girls bathroom • Large living room • Small kitchen • Utility Room • Storage Area • Entry Foyer.	1,375m <sup>2</sup>	50-60 girls
Childrens Homes (STAGE 2)	5	Stage 2 Girls homes to be constructed at a later stage.	1,375m <sup>2</sup>	100-120 girls
Multipurpose Hall + Main Kitchen	1	<ul style="list-style-type: none"> <li>• Multi-purpose building to be used for a common kitchen area to prepare meals to feed the girls and staff from all ten homes, meeting room for special events, dinners on special events.</li> <li>• Bakery to support MGRC + Eco-lodge guests (+ possibly public)</li> <li>• Bulk food storage</li> <li>• Storage for eating utensils and supplies</li> <li>• Dining tables for 160 people for special events</li> <li>• Amenities (toilets) - detached from main building</li> <li>• Outdoor hand wash station</li> <li>• Projector and screen and seating for movie nights.</li> </ul>	350m <sup>2</sup>	Accommodating 160 people
Admin Center	1	<ul style="list-style-type: none"> <li>• Foyer area + Reception</li> <li>• Directors office with conference table</li> <li>• Accountants office</li> <li>• Projects office</li> <li>• Each office should accommodate at least two people and be open and visibility from hallways.</li> <li>• Conference room for 12 people</li> <li>• Toilet with hand basin</li> <li>• Donor wall of fame visible when entering the administrative center</li> </ul>	120m <sup>2</sup>	
Director's House	1	<ul style="list-style-type: none"> <li>• 3 bedrooms, master with desk</li> <li>• 2 baths</li> <li>• Living room</li> <li>• Full Kitchen to cook and eat</li> <li>• Storage room</li> </ul>	120m <sup>2</sup>	
Pre-school	1	<ul style="list-style-type: none"> <li>• 2 classrooms 20 students each</li> <li>• 4 toilets and hand basins</li> <li>• Storage room</li> <li>• Teacher office</li> </ul>	200m <sup>2</sup>	40 children
Outdoor Areas	TBC	• Designed outdoor space to provide social areas/outdoor gathering spaces		

BUILDING / AREA	No.	NOTES	AREA	CAPACITY
Gatehouse/Night watchman shelter	1	• Entry gatehouse/Night watchman shelter	12m <sup>2</sup>	
Maintenance/Building + Storage Shed		<ul style="list-style-type: none"> <li>• Create a covered area for 4-6 metal storage units,</li> <li>• Workshop</li> <li>• Toilet</li> </ul>	150m <sup>2</sup>	
Access/Entry + Visitor Parking	1	Main entry and access to the centre, and parking area		
Access/Service-way	1	Limited service access - suitable for heavy machinery used to work the land		
Future Vocational/Skills Training Center		• Possible future training center facility (incl. 4x standard training classrooms and storage)	270m <sup>2</sup>	
<b>ECO-LODGING</b>				
Lodge Foyer/Entry/Dining	1	• Entry/Admin/Foyer + Facilities	150m <sup>2</sup>	
Lodge accommodation	6	• 5-6 rooms with bathroom	100m <sup>2</sup>	
Lounge/Library/Games	1	• Common space + relaxation area	120m <sup>2</sup>	
Volunteer accommodation	1	• 2-3 bedrooms, with kitchenette/lounge/bathroom	100m <sup>2</sup>	
<b>FARM BUILDINGS</b>				
Dairy Farm + Barn	1	• Zero grazing unit, with grain storage attached, outdoor fenced area for small grazing to accommodate six dairy cows		
Chicken house	1	• Chicken house segregated into two sections, one for mature layers and the other for new chicks. Outdoor area for chickens to roam.		
Goat Shelter	1	• Goat shelter to accommodate 300 goats with gate to outside the facilities		
Greenhouses	TBC	To accommodate better all year round growing/food supply		
Additional Livestock	TBC	Fenced areas for livestock		
Gardens + Aquaponics	TBC	Various crops and vegetables grown		
<b>OTHER REQUIREMENTS</b>				
Water Tanks, Header Tanks + Bores	TBC			
Sports Fields + Running Track	1	Soccer field + 400m running track		
Energy Systems/Solar	TBC	Generator + Solar Panels/Storage		
Playgrounds	1	Nursery play area + general play area		
Gardens + Aquaponics	TBC	Various crops and vegetables grown		



# Proposed Girls Homes & Eco-Lodge

## Area / Use Summary

BUILDING / AREA	No.	CAPAC-ITY	NOTES	AREA Sq/m	TOTAL AREA Sq/m
<b>Upper Levels</b>					
Entry Foyer	1		Entry foyer, area for shoes etc	12m <sup>2</sup>	12m <sup>2</sup>
Matron's Room	2	2 matrons	Room for each matron with desk/wardrobe connect- ed to ensuite	16- 22m <sup>2</sup>	38m <sup>2</sup>
Matron's Ensuite	2		Ensuite to Matron's room; Shower, Vanity, Toilet	5m <sup>2</sup>	10m <sup>2</sup>
Girl's Room	3	12 girls (4x girls per room)	Girl's room with bunks, desk and storage/drawers	16m <sup>2</sup>	48m <sup>2</sup>
Girl's Bathroom	1		3x showers, 3x toilets + basin	25m <sup>2</sup>	25m <sup>2</sup>
Storage Room	1		General Storage for Girl's Home	12m <sup>2</sup>	12m <sup>2</sup>
Circulation/Stairs	1		Circulation/Hallway + Stairs	50m <sup>2</sup>	50m <sup>2</sup>
<b>Lower Level</b>					
Living Room/Common Area	1	For capacity of 16x people	Table to eat together as a family (seating for 16) / movie area + couches + chairs for 16	52m <sup>2</sup>	52m <sup>2</sup>
Kitchen	1		Small kitchen for breakfast/light meal preparations	15m <sup>2</sup>	15m <sup>2</sup>
Utility Room	1		Washing area for clothes (maybe machines)	10m <sup>2</sup>	10m <sup>2</sup>
Storage (understair)	1		Storage to Living Room	3m <sup>2</sup>	3m <sup>2</sup>
<b>TOTAL HOME FLOOR AREA</b>				<b>275m<sup>2</sup></b>	

LODGE/ AREA	No.	CAPACITY	NOTES	AREA Sq/m	TOTAL AREA Sq/m
Lodge Admin/Reception/ Commons	1		Admin/Commons	150m <sup>2</sup>	150m <sup>2</sup>
Lodge Lounge/Dining	1		Lounge/Dining	120m <sup>2</sup>	120m <sup>2</sup>
Villas	6		1-2 bedroom villas w/bathroom	100m <sup>2</sup>	600m <sup>2</sup>

# Precedents

## Look & Feel



### TANZANIAN HOME

Rammed earth walls, central light-well + floating roof



### ONE HEART ECO VILLAGE, KENYA

Central Courtyard, inward focus, integration with site, indoor/outdoor ambulatory circulation



### CHILDRENS VILLAGE, BRAZIL

Brick walls, common simple post+beam roof structure, double height space, reference for MGRC admin hub.



### DOCTORS' HOUSING IN LÉO, BURKINA FASO

Playful materiality, each girl's house with its own colour identity



### ECONEF CHILDREN'S CENTRE, KINGORI, TANZANIA

Brick, Concrete Perimeter Beam, Natural fibre + Tin roof



# Typical Girls' Home

## Sketch Plan



LOWER PLAN

Lower Floor Area: 80m<sup>2</sup>

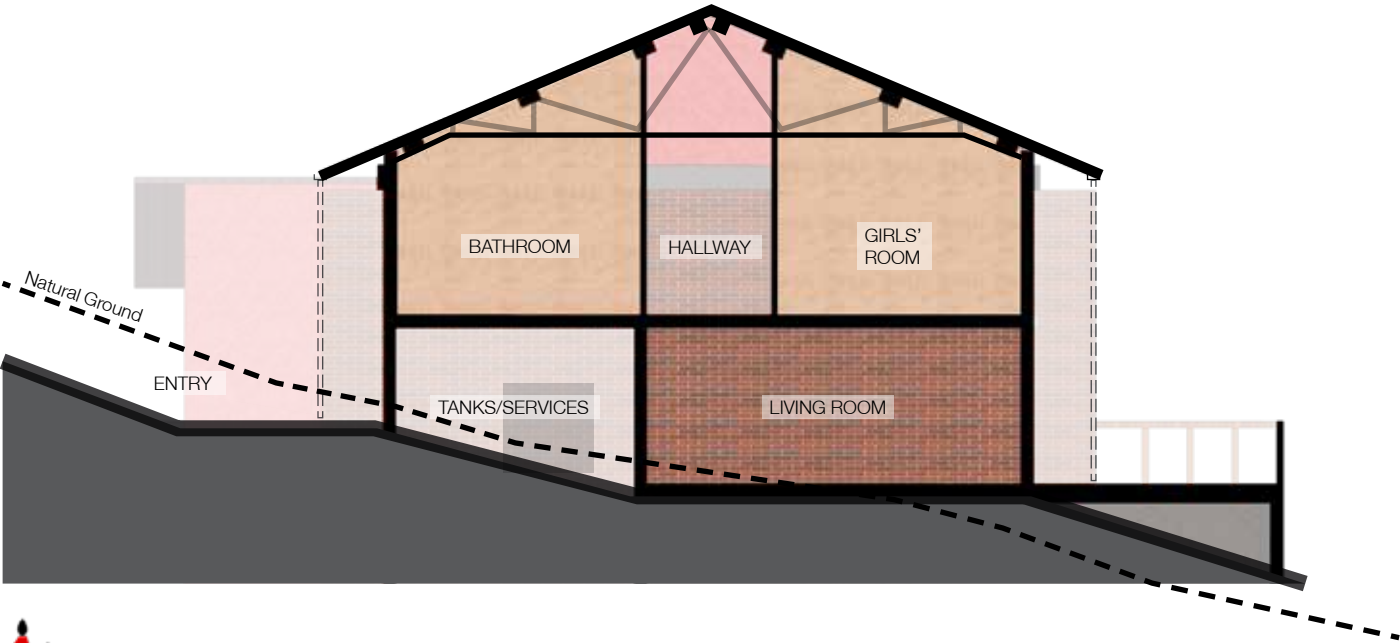
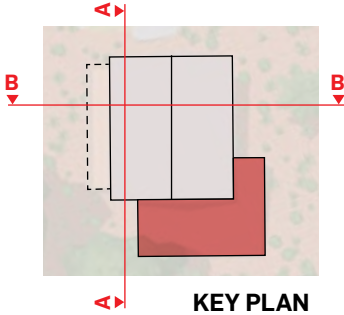


UPPER PLAN

Upper Floor Area: 195m<sup>2</sup>

# Typical Girls' Home

## Sketch Sections





## Girls' Home - Valley View





## Girls' Home Entrance





# Local Construction

## Methods & Materials

---



THATCH + EARTH/STICKS



BRICKS/BLOCKS + EARTH



CONCRETE

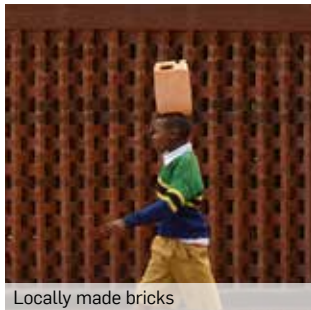


ROCKS, EARTH +  
TIN ROOFING



STEEL TRUSS + SHS  
SECTION

## Materiality



Locally made bricks



Rammed earth



Profiled metal sheet & shuttered



Masonry detailing - 'missing block'



Bamboo structure



Thatch natural fibres

# Local Construction Practice

## Methods & Materials

### STRUCTURE:

*\*As per engineering drawings.*  
Reinforced concrete posts with brick infill and upper level ring/perimeter beam.

### ROOF:

Corrugated galvanised metal sheeting with SHS sections and engineered prefabricated truss structure.

### MASONRY:

Locally sourced masonry brick walls.

### ROOF



### INTERIOR FINISHING:

Rendered brick or painted hardiboard on timber structure.

### EXTERNAL WALLS



### FOUNDATIONS



### EARTHWORKS:

*\*Earthworks to be completed in accordance with with engineering.*  
Earthworks to provide a level building platform/terrace, and compact the terrain sufficiently prior to construction. Any slope to be battered back and a trench should be dug along the bottom of sloped embankment (at a set distance from building/foundation edge wall to direct water away from building).

### FOUNDATIONS:

*\*Foundations to be completed in accordance with with engineering.*  
Strip footings in concrete block (sand/cement composite), fill using earth from site, lay damp proof membrane with poured concrete slab over preferred. Foundation depth should raise building sufficiently out of the watertable to avoid water ingress through the rainy months.

### WATER-TANKS + SERVICES:

Watertanks and services located in accessible sub-floor area under bathrooms. Watertanks used for water collection, and for flushing toilets/washing basins.



# Girls' Homes Cluster





# Style Precedent Imagery

## Girls' Homes



MATERIALITY



ARCHITECTURAL STYLE



PRECEDENTS





# Eco-Lodge

## Typical Plan - 2 Bedroom



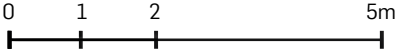
TYPICAL LODGE

# Eco-Lodge

## Typical Plan - 1 Bedroom



**LODGE FLOOR PLAN**  
Floor Area: 78m<sup>2</sup>





# Eco Lodge





# Eco Village





# Style Precedent Imagery

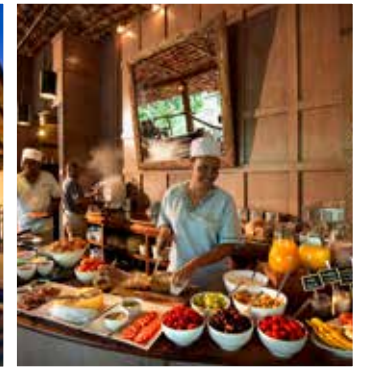
## Eco-Village Lodges



MATERIALITY



ARCHITECTURAL STYLE

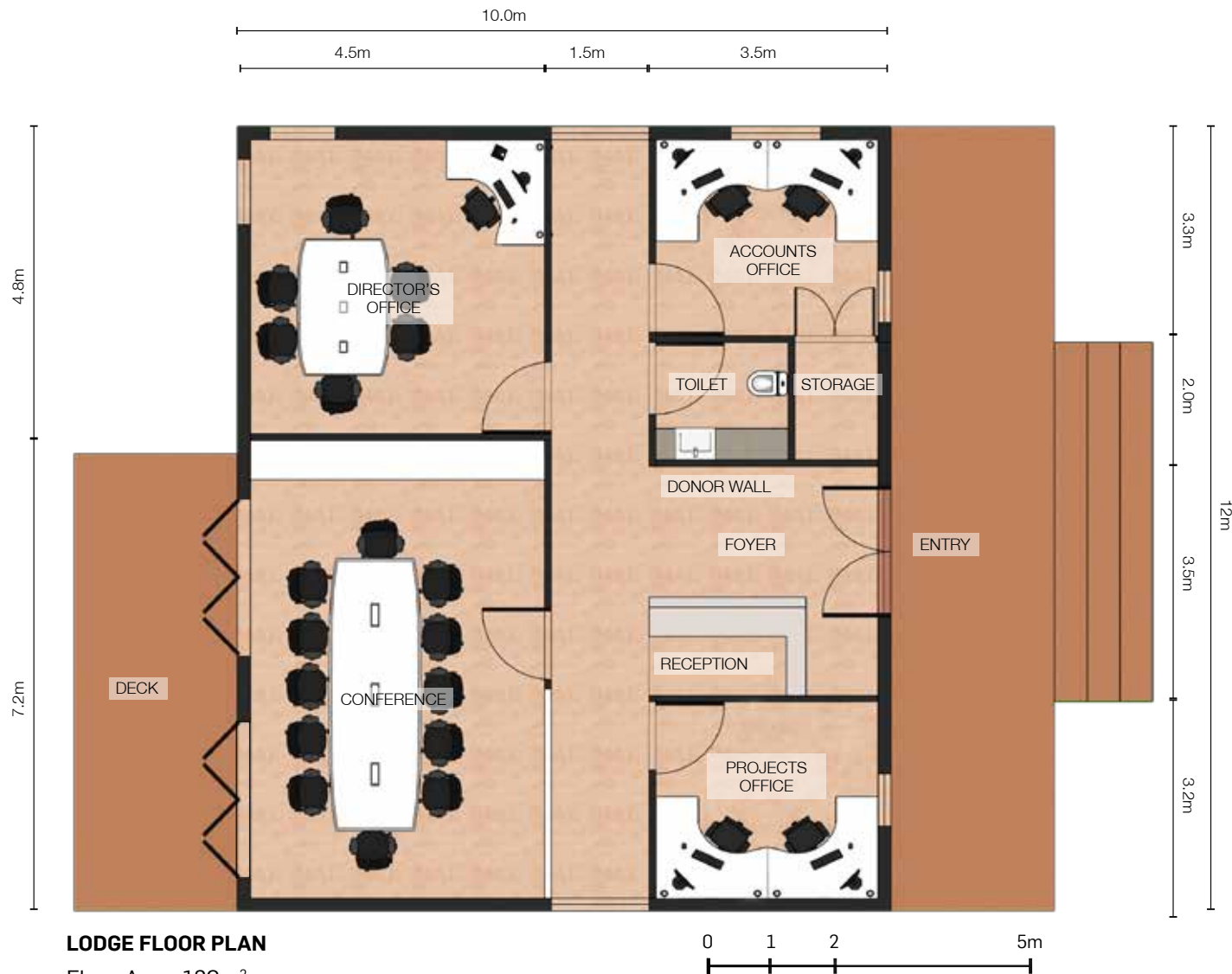


PRECEDENTS



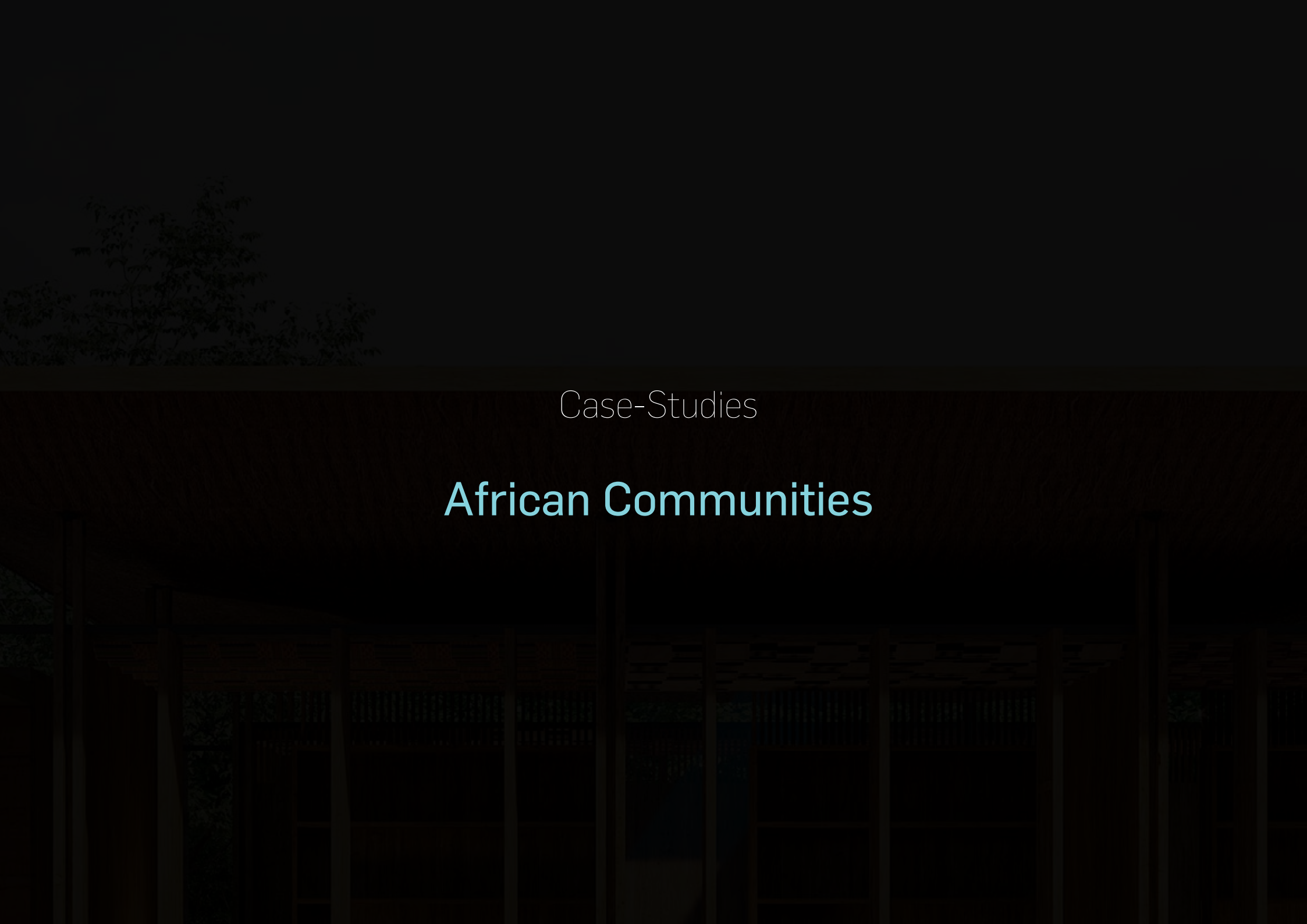
# MGRC Administration + Reception

## Sketch Plan



**LODGE FLOOR PLAN**  
Floor Area: 120m<sup>2</sup>



The background of the slide features a dark, atmospheric photograph. In the foreground, the wooden frame and thatched roof of a traditional African building are visible, with light filtering through the structure. In the upper left corner, the silhouette of a tree is set against a dark sky.

Case-Studies

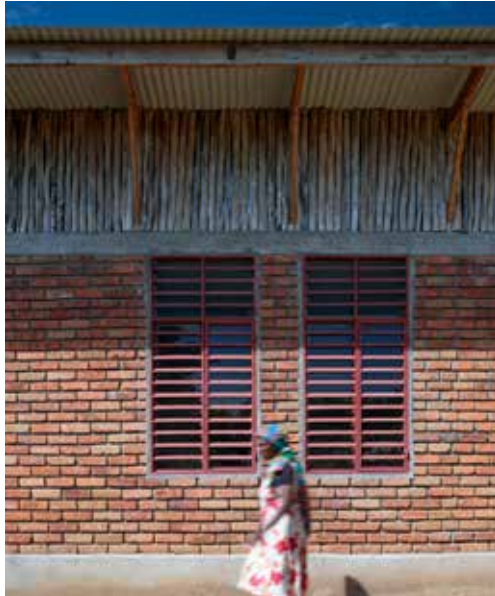
# African Communities

# Econef Childrens' Centre

## Kingori, Tanzania

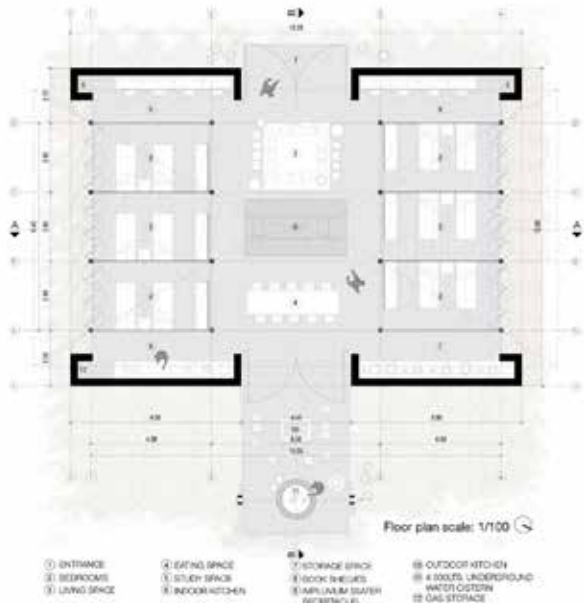
ECONEF offer security and everyday necessities for the 16xchildren living at the Jua Kali orphanage. The new Children's Center includes sleeping quarters and classrooms for 25 children.

To help achieve this goal the new buildings are planned to be ecologically and economically sustainable and largely maintenance-free. The center produces its own electricity through the installation of solar panels. Systems for rainwater harvesting and natural ventilation are integrated into the architectural design. The construction techniques and materials are local and based on traditional techniques to minimize the need for external construction expertise and excessive transportation costs.





# Tanzanian Family House Concept

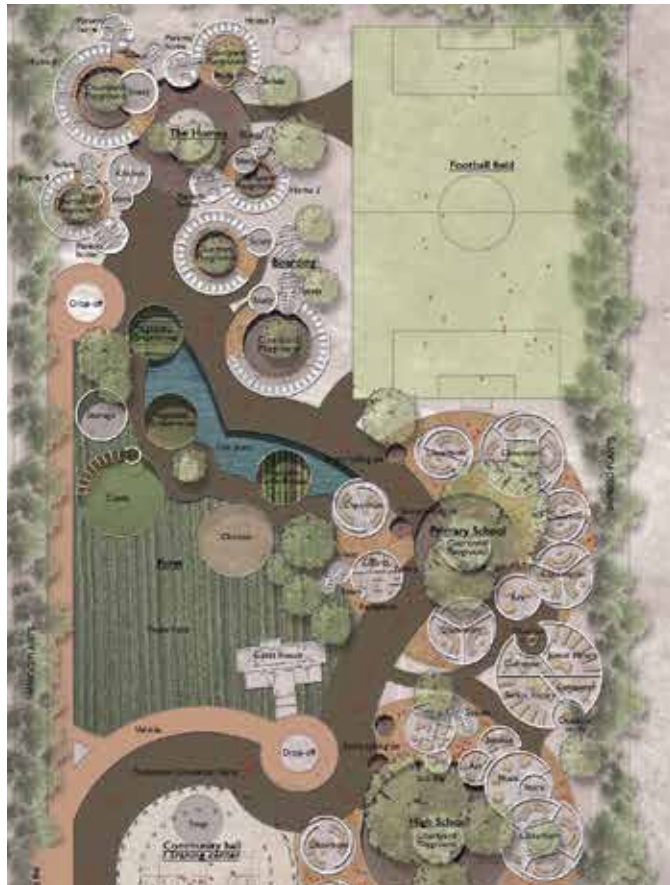


This house is a contemporary interpretation of Iraqw and the Tanzanian vernacular and region, resulting in the adoption of a constructive, material, functional and typological logic that reflects local culture and character. Inverting the roof, a slight modification of the collective imagery of their home, became a requirement in order to accomplish a correct functioning of the building and its elements. This operation enables natural light to bathe the interior, it gathers rainwater, it acts as a ventilation bell, and it grants the inner spaces independence from the roof structure, allowing future modifications. The ceiling is made of traditional thatch weaving and incorporates local craftsmanship as a constructive element, the same way the room's is also made out of traditional African textiles.



# OneHeart Eco Village Concept Kenya

This village is inspired by the traditional Kenyan Maasai architecture and emphasises the spirit of community in-between spaces and use of local materials. It is planned as a self-sustaining village with clear zoning of programmes. Public areas like the training center, community hall and farm are located near the front of the property. Homes for the orphans are toward the back protected by the schools farm. Schools and homes are laid out in circular clusters and each cluster represents a unique programme.





# Black Rhino Academy Karatu

Black Rhino Academy (constructed in 2017) is a primary and secondary international boarding school (not for profit organisation) conceived as an immersive environment for learning from nature, addressing the need for excellent education in rural Tanzania. Situated on a very hilly site just outside Tanzania's Ngorongoro Conservation Area Authority and the breathtaking Ngorongoro Crater, the school is surrounded by rich natural vegetation and abundant wildlife. The school was designed by Nigerian architect Kunlé Adeyemi/ NLÉ (based in Netherlands).





Case-Studies

# Eco-tourism & Lodge



# Global Code of Ethics for Tourism

## United Nation's World Tourism Organisation

"Tourism is a genuine driver of solidarity and development. Let us all fully harness its power to bring people and communities together, abiding by the Global Code of Ethics for Tourism. This way tourism can keep delivering better opportunities and sustainable development for millions across the globe."

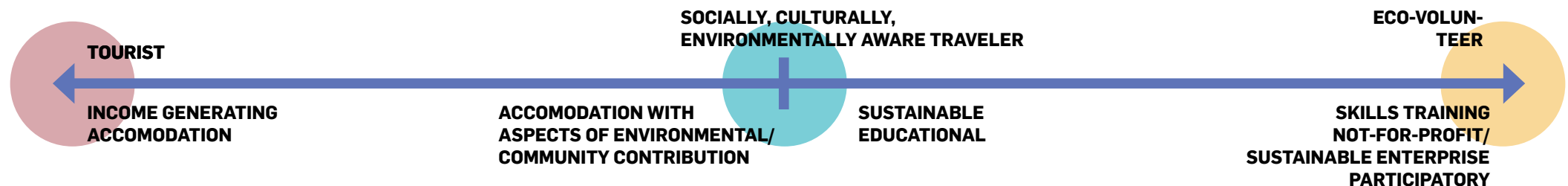
- Zurab Pololikashvili,  
(UNWTO Secretary-General)  
August 2020

As a fundamental frame of reference for responsible and sustainable tourism, the Global Code of Ethics for Tourism (GCET) is a comprehensive set of principles designed to guide key-players in tourism development. Addressed to governments, the travel industry, communities and tourists alike, it aims to help maximise the sector's benefits while minimising its potentially negative impact on the environment, cultural heritage and societies across the globe.

### ARTICLES

1. Tourism's contribution to mutual understanding and respect between peoples and societies
2. Tourism as a vehicle for individual and collective fulfilment
3. Tourism, a factor of sustainable development
4. Tourism, a user of the cultural heritage of mankind and contributor to its enhancement
5. Tourism, a beneficial activity for host countries and communities
6. Obligations of stakeholders in tourism development
7. Right to tourism
8. Liberty of tourist movements
9. Rights of the workers and entrepreneurs in the tourism industry
10. Implementation of the principles of the Global Code of Ethics for Tourism

## Types of travelers + places to stay



# Sustainable Development Goals

## United Nations



The MGRC project at a strategic level has the opportunity to acknowledge and align the new centre with the Sustainable Development Goals (established by the UN) to promote improved conditions addressing the some of the major global challenges we face, including poverty, inequality, climate change, environmental degradation, peace and justice. MGRC as a socially motivated not-for-profit exemplifies and represents many of these aspirations already. We look forward to seeing how we may be able to achieve a holistic design for the new center that creates micro-scale opportunities and a local-ripple effect across these 17 principles.



# Acacia Farm Lodge

## Karatu, Tanzania

'ACACIA FARM LODGE is a romantic country lodge nestled in an active mixed farm located on the spectacular Great Rift's escarpment area with a commanding panoramic views of the amazing Karatu farmlands and the nearby Ngorongoro forest area.'

### Key Info

- Locality: Karatu
- 28 contemporary African chalets, large sized cottages with living areas and bedrooms with ensembles
- Active working farm + gardens
- Pool + gym/workout room
- Coffee plantation
- A lot of the food served at the lodge is produced on the farm
- Boutique, eco-friendly accommodation, aimed at Safari Travelers
- The activities available include farm tours, a town tour, cultural experiences, game drives and nature walks

### Types of Rooms

Chalets(Luxury Suites)/Sleeps 4 w/  
living room, bathroom + balcony

### Room Rates

\$600 USD  
per room/per night





# Suwan Organic Farmstay

## Phen, Thailand

'Voluntouring / Woofing, eco village, permaculture, organic culture, green tourism, immersion in an authentic and preserved Thailand, Suwan Organic Farmstay is a bit of it all. Suwan Organic Farmstay is a little over three hectares with rice paddies, fishing lakes, organic vegetable gardens and fruit trees. The main goal is to introduce you to permaculture and all forms of organic agriculture that respect the environment through discovery, experience and learning.'

### Key Info

**LOCALITY:** Phen, Thailand  
Located in northern Thailand, nestled 20 km from the city of Udon Thani. Suwan Organic Farmstay is an organic farm of 32,000 m<sup>2</sup>, between biotope and biocenosis, aimed at those looking for an eco-responsible experience.

Accommodation in our family bungalow (dormitory, 3-4 people maximum). Couples who want it can apply to stay in a private bungalow if there's availability.

Opportunity to work with locals, stay

and volunteer on the farm, contributing to working and upkeep of facilities/farms. Volunteers help to Manu & Aun, for the various tasks of the organic farm 5 hours a day from Monday to Friday.

On weekends you will be free, an opportunity to meet and share with "the locals" in full immersion.

Learn about local customs, permaculture and ways of life

### Types of Rooms

Dormitory rooms/bungalows.  
Private rooms available on request.

### Room Rates

\$25 USD  
per person/per night





# Rhotia Valley Tented Lodge & Children's Home

## Rhotia, Tanzania

'Rhotia Valley Children's Home is our safe and caring home for orphans from the local community. We help children who do not have a family build their future – a promising future! We create jobs for the local community, not only at the lodge but also at the bakery, at the dairy farm and at the Coffee Corner, the new training centre.'

### Key Info

LOCALITY: Rhotia (near Karatu)  
Established in 2006, Dutch founders  
Not-for-profit ecologically responsible  
+ community focused community building organisation, that contributes back to the local area  
Profits from the lodge accommodation are re-invested into the children's home + 2 local schools  
3x Children's Houses  
2x 50 000 litre water tanks and a pump system – Sustainability & Community, + a borehole + a 80,000 litre tank  
2xBio-gas tanks - one utilising cow-dung, one utilising human waste to generate energy  
Solar energy grid  
15x ensuite tented safari houses

Self-sustainable farm + gardens, including beehives  
An onsite bakery  
Supports a Coffee corner for traineeship programme/hospitality training

### Types of Rooms

Tented houses w/ bathroom (flush-toilet) + verandah. Family rooms available w/multiple beds

### Room Rates

\$145-270 USD  
pp/per night





# The Highlands

## Ngorongoro Crater, Tanzania

'This low-impact luxury camp in Tanzania is made up of eight domes that offer a wilderness experience amidst, stunning views of Serengeti National Park. Asilia, is an eco-tourism company offering exclusive, carbon-neutral camps and lodges across Africa.'

### Key Info

LOCALITY: Ngorongoro Conservation Area, Olmoti Volcano Forest

Adventure vacation, Countryside hotels, Culture & heritage, Cutting-edge design, Eco travel, Family vacation, Glamping, Local flavor, Lodges, Modern design, Quiet location, Safari, Secluded location, Wildlife travel,

Safari based accomodation offering

Low-impact buildings that sit lightly on the land. The Asilia Lodges are Carbon Neutral and integrated into the landscape and natural environment

7x Domed Canvas + Glass Suites with king-size beds ensuites, + 1x honey-moon suite, and lounge + bar in wider camp.

### Types of Rooms

Geodesic Glamping Domes, w/ bathrooms, balconies + fireplaces.  
Family domes available

### Room Rates

\$750-1,250 USD  
pp/per night incl safari/meals





# Impact Tomorrow

**ClarkeHopkinsClarke**

Melbourne

115 Sackville Street

Collingwood VIC 3066

03 9419 4340

Sydney

50 Holt Street

Surry Hills NSW 2010

02 9221 9200

[www.chc.com.au](http://www.chc.com.au)

[studio@chc.com.au](mailto:studio@chc.com.au)



## REGISTRATIONS



Member  
Australian  
Institute of  
Architects



ARBV

ARBNSW

ISO9001