

Typical Girls' Home

Sketch Plan



LOWER PLAN

Lower Floor Area: 80m²



UPPER PLAN

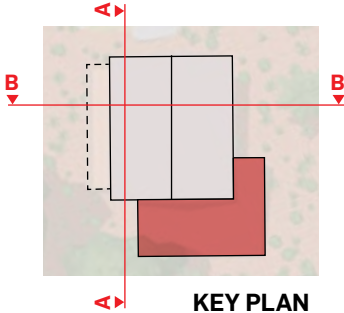
Upper Floor Area: 195m²

Typical Girls' Home

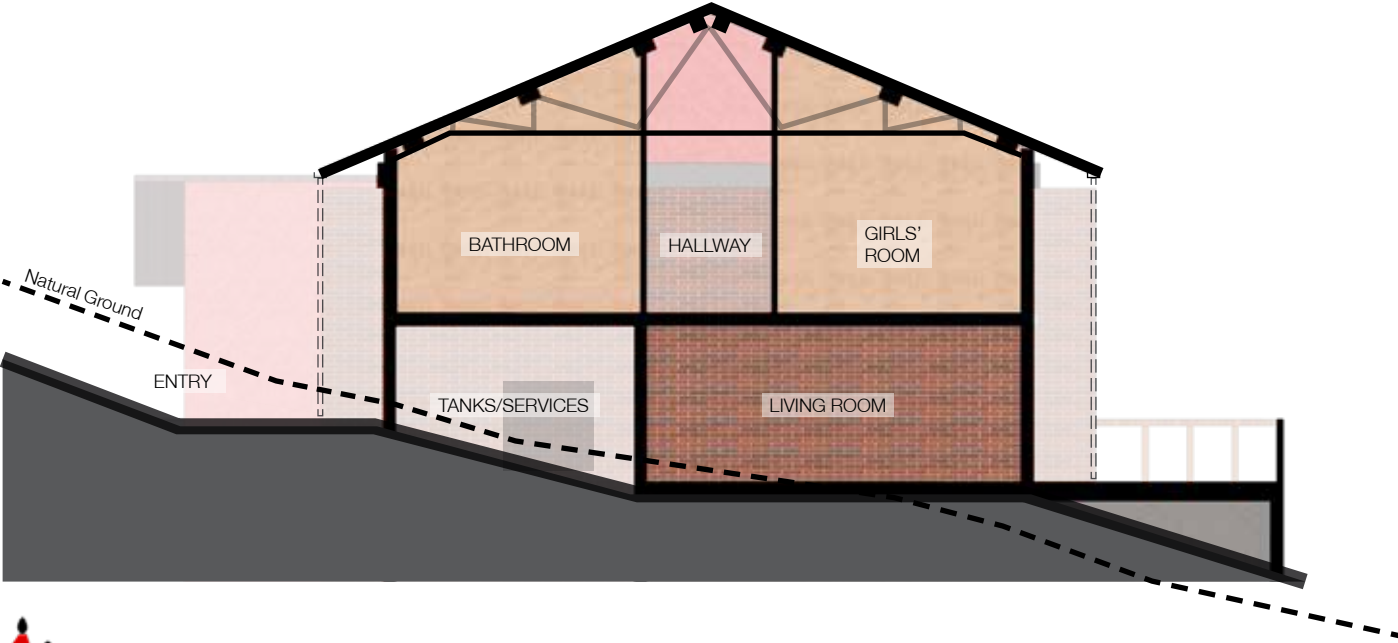
Sketch Sections



SECTION A-A



KEY PLAN



SECTION B-B

Girls' Home - Valley View



Girls' Home Entrance



Local Construction Methods & Materials



THATCH + EARTH/STICKS



BRICKS/BLOCKS + EARTH



CONCRETE



ROCKS, EARTH +
TIN ROOFING



STEEL TRUSS + SHS
SECTION

Materiality



Locally made bricks



Rammed earth



Profiled metal sheet & shuttered



Masonry detailing - 'missing block'



Bamboo structure



Thatch natural fibres

Local Construction Practice

Methods & Materials

STRUCTURE:

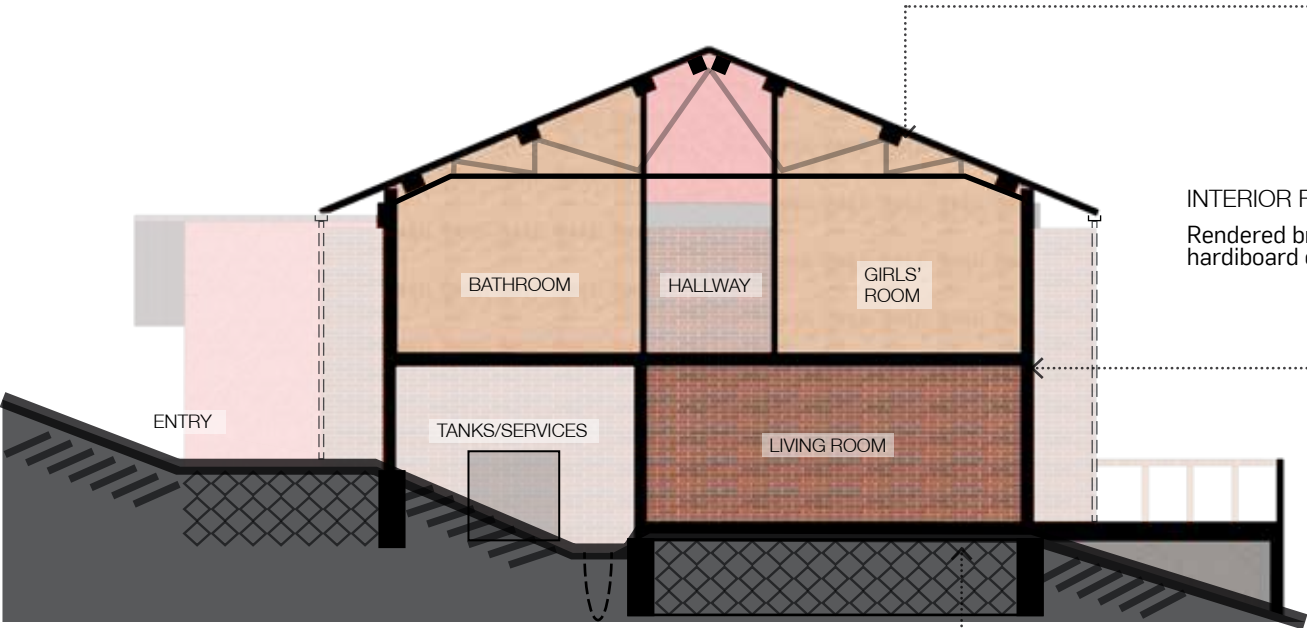
**As per engineering drawings.*
Reinforced concrete posts with brick infill and upper level ring/perimeter beam.

ROOF:

Corrugated galvanised metal sheeting with SHS sections and engineered prefabricated truss structure.

MASONRY:

Locally sourced masonry brick walls.



ROOF



INTERIOR FINISHING:

Rendered brick or painted hardiboard on timber structure.

EXTERNAL WALLS



FOUNDATIONS



EARTHWORKS:

**Earthworks to be completed in accordance with with engineering.*
Earthworks to provide a level building platform/terrace, and compact the terrain sufficiently prior to construction. Any slope to be battered back and a trench should be dug along the bottom of sloped embankment (at a set distance from building/foundation edge wall to direct water away from building).

FOUNDATIONS:

**Foundations to be completed in accordance with with engineering.*
Strip footings in concrete block (sand/cement composite), fill using earth from site, lay damp proof membrane with poured concrete slab over preferred. Foundation depth should raise building sufficiently out of the watertable to avoid water ingress through the rainy months.

WATER-TANKS + SERVICES:

Watertanks and services located in accessible sub-floor area under bathrooms. Watertanks used for water collection, and for flushing toilets/washing basins.

Girls' Homes Cluster



Impact Tomorrow

ClarkeHopkinsClarke
Melbourne
115 Sackville Street
Collingwood VIC 3066
03 9419 4340
Sydney
50 Holt Street
Surry Hills NSW 2010
02 9221 9200
www.chc.com.au
studio@chc.com.au



REGISTRATIONS



ARBV



ARBNSW



Australian
Institute of
Architects

ISO9001